

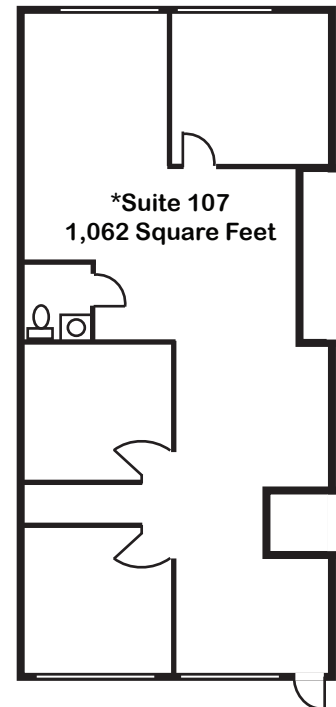
OFFICE SPACE FOR LEASE



Sandtree Plaza, 600 Sandtree Drive, Palm Beach Gardens, FL 33403

PROPERTY HIGHLIGHTS:

- GREAT LOCATION
- ATTRACTIVE LEASE TERMS
- IMMEDIATE OCCUPANCY
- I-95 EXPOSURE WITH SIGNAGE AVAILABLE
 - Traffic Counts: 57 Million Cars Per Year
- AMPLE FREE PARKING
- CURRENT AVAILABILITIES:
 - 4,500 s.f.
 - 1,062 s.f.*
**Floor Plan Shown*
 - 620 s.f.
 - 475 s.f.



**FOR MORE INFORMATION CONTACT:
(561) 624-5888**

Scott Hinterleiter, SCLS

Leasing Director

Email: shinterleiter@capitalrealtyadvisors.com

 **CAPITAL REALTY ADVISORS, INC.**
Professional Real Estate Services

COMMERCIAL REAL ESTATE SERVICES

600 SANDTREE DRIVE, SUITE 109, PALM BEACH GARDENS, FL 33403 ▪ TEL: (561) 624-5888 ▪ www.capitalrealtyadvisors.com

No warranty or representation, expressed or implied, is made as to the accuracy of the information contained herein, and same is submitted subject to errors, omissions, change of price, rental or other conditions, withdrawal without notice.